

Quick Assembly Guide

BESV LX1



Contents

1.	What's in the Box.....	2
1.1	Main Box Contents	2
1.2	Accessory Box Contents	2
2.	Assembly Procedures	3
2.1	Front Wheel	3
2.2	Front Fender and Reflector	5
2.3	Pedal	6
2.4	Battery.....	7
2.5	Saddle & Seat Post.....	8
2.6	Rear Light.....	9
3	Checklist.....	10

1. What's in the Box

1.1 Main Box Contents

1. Main Bike Assembly
2. Accessory Box
3. Saddle/Seat Post Set
4. Front Wheel
5. Front Fender



1.2 Accessory Box Contents

1. Product Documentation
2. Charger
3. Pedals
4. Rear Light & Reflector
5. Quick Release (QR) for the Front Wheel
6. Key
7. Front reflector and screw sets



2. Assembly Procedures

2.1 Front Wheel

- 2.1.1 Unpack the front wheel and the main bike assembly.



- 2.1.2 Insert the wheel into the fork end.



Attention: The disk should be placed between the brake pads.



2.1.3 Set the quick release (QR)

Unscrew the nut and spring from the QR and insert the QR stem from the left side of the bike.

Attention: The quick release handle should be on the left side of bike.



2.1.4 Tighten the nut

Place the spring back in the QR stem and tighten the nut until you encounter resistance. Then loosen 1/4 turn.

Note: The tapered end of the spring should be facing inward.



2.1.5 Tighten the nut

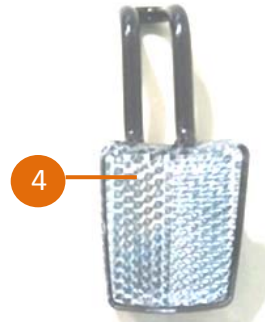
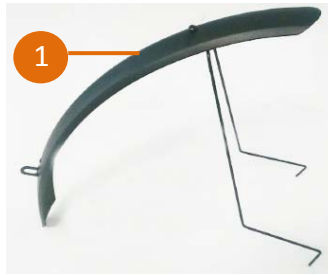
Lock the QR by pushing the handle upwards until parallel with fork. Turn the wheel and verify the rotation is smooth



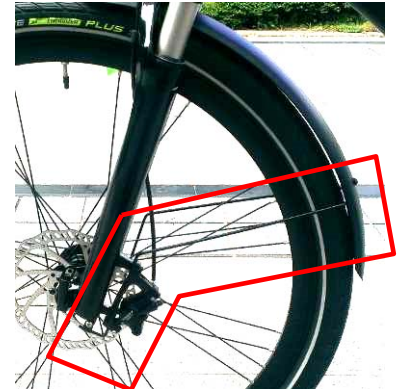
2.2 Front Fender and Reflector

2.2.1 Fender parts introduction

1. Front Fender & Support
2. Fix Plate*2
3. M5 Screw*2
4. Front Reflector
5. Fender screw with washers



2.2.2 Place the fix plate at the bottom of the front fork and loosely secure with the M5 screw.



2.2.3 Place front fender and support with the end of the support going into the fix plate.

2.2.4 Place the front reflector at the top of the fork where the fender meets the fork, then loosely secure with the fender screw.



2.2.5 Adjust the fender position, and then tighten the screws at the reflector and at the fix plate.

Note: When securing the reflector to the fork, make sure the placement order is fork, fender and then reflector.

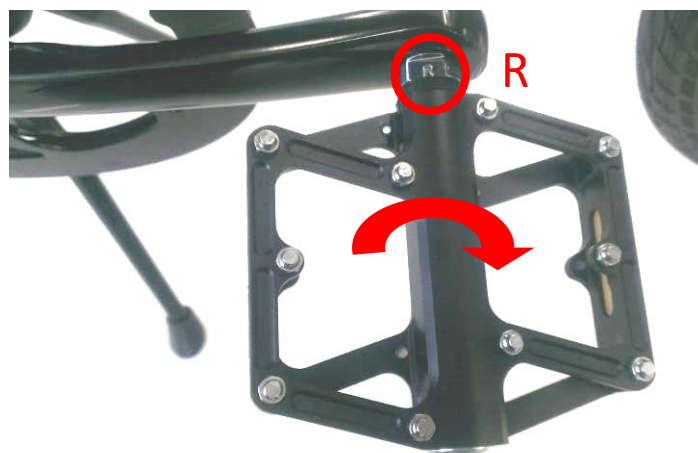
2.3 Pedal

2.3.1 Take out the pedal.



2.3.2 Set up the right pedal

Note: There is a mark "R" on one of the pedal. Assemble it onto the right crank clockwise.



2.3.3 Set up the left pedal

Take another pedal and assemble it to the left crank counterclockwise.



2.4 Battery

2.4.1 Insert the key and turn it to the "OPEN" position.



2.4.2 Pull the battery cover upward.



2.4.3 Slide the battery in and push it until it firmly connects to the socket.



2.4.4 Close the battery cover. Push the key in and turn it to "OFF" position to lock the battery cover in place.



2.5 Saddle & Seat Post

2.5.1 Open the seat post clamp and insert the seat post



Attention: the depth of the seat post. The seat post must be inserted at least 10cm (3.9inch).



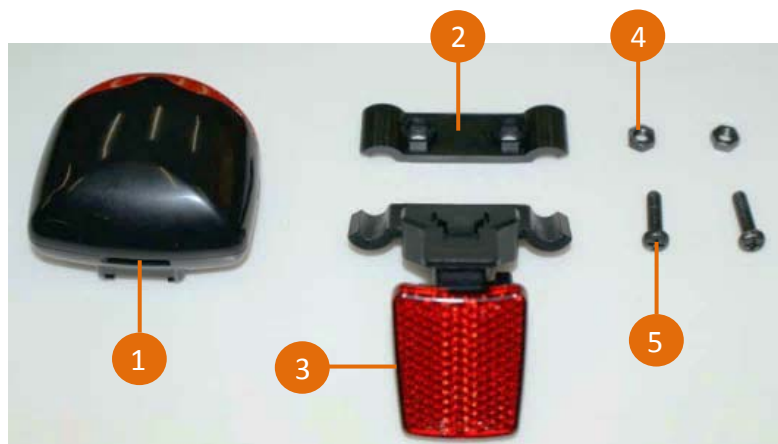
2.5.2 Set the saddle face forward and adjust the height. Lock the seat post clamp.



2.6 Rear Light

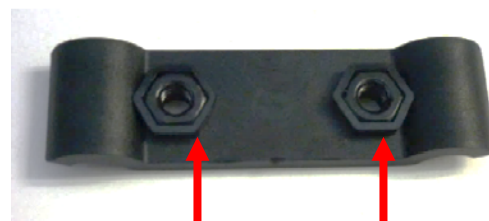
2.6.1 Introduction of the rear light parts.

1. Rear light
2. Bracket upper housing.
3. Bracket lower housing & reflector
4. M4 Nut*2
5. M4*L15 Screw*2



2.6.2 Bracket.

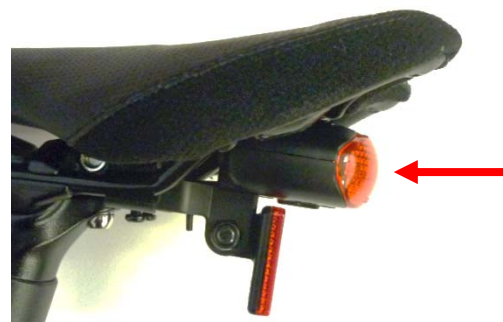
Put the M4 nut into bracket upper housing.
Set under the saddle.



2.6.3 Combine upper and lower housing by M4 nut.



2.6.4 Insert the rear light into the bracket rail.



3 Checklist

- 3.1 Check the tire pressure is normal.
- 3.2 Check the function of the brakes, derailleur, and chain.
- 3.3 Check the function of the electric module and the battery power. Please refer to LX1 user manual.

